

SMALL RODENTS • RACKS

TECNIPLAST RACKS ARE ALL MADE OF AISI 304 S/S. IT IS POSSIBLE TO CHOOSE AMONG DIFFERENT TYPES OF RACK:

- RUNNER STYLE
- ADJUSTABLE SHELF STYLE
- DEMOUNTABLE SHELF STYLE
- WELDED SHELF STYLE



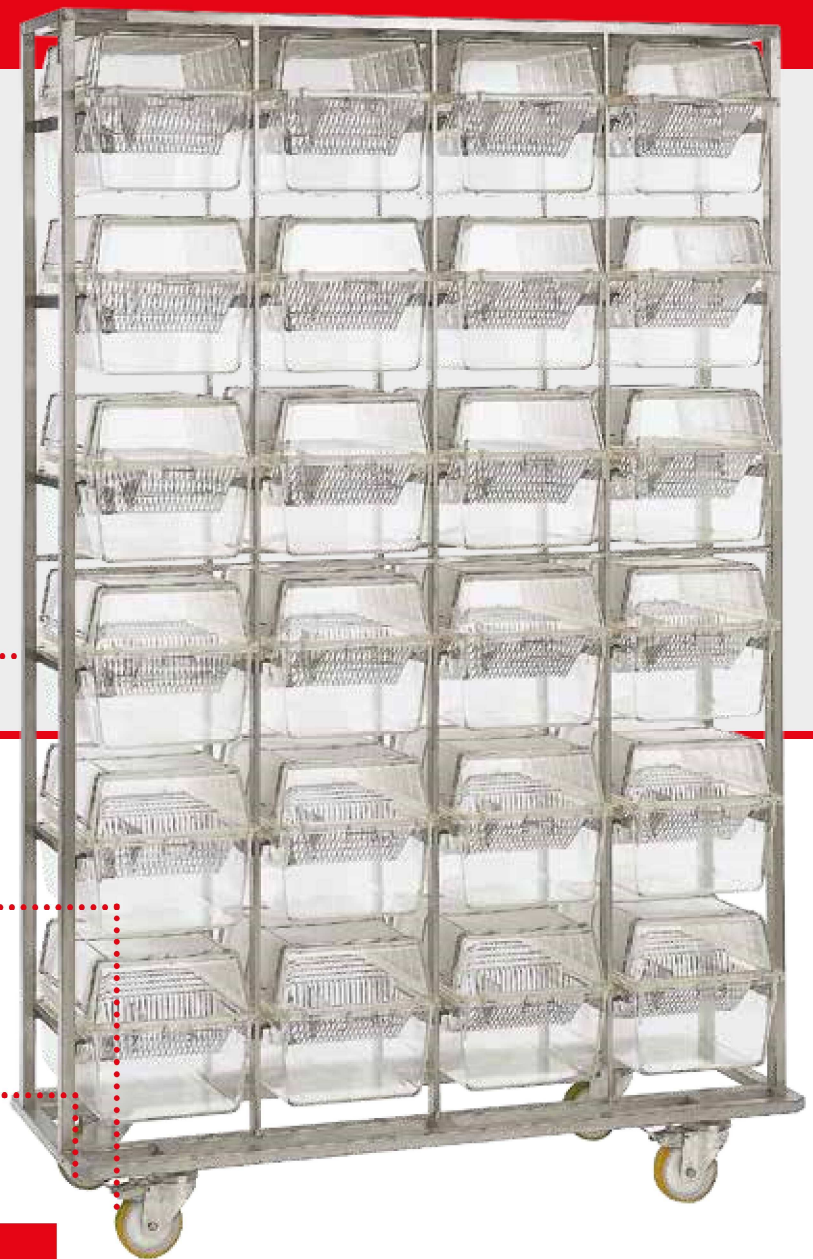
NYLON RUNNERS



POLYURETHANE
COATED CASTORS



BUMPER



RUNNER STYLE RACK

Tecniplast AISI 304 Stainless Steel racks are unparalleled with respect to husbandry and hygiene considerations, occupational health and safety requirements, ergonomics, reduced noise levels and aesthetic appeal.

The design permits an excellent view into all cages and their occupants. Having pioneered tubular S/S construction of racks, Tecniplast today utilizes a 3D-CAD-system design, automated cutting, punching and TIG welding construction processes.

Attention to detail, such as uniform polishing and finishing conclude the work. This is your guarantee for a long-lasting product that offers an exceptional Return on Investment.

Tecniplast unique "T-profile" suspension runners are specifically designed to minimize dirt traps, whilst permitting safe, simple and silent positioning of cages without risk of damage. They are far superior to metal runners or channels of other racks.

Other features are:

- S/S solid top sheet to reduce the exposure to draught and excessive light of the top rows
- Tubular base corners are all rounded for improved safety and to avoid damage of wall covering; four retrofitting plastic bumpers can also be provided on request.

MESH BOTTOM CAGE

Mesh bottom cages are recommended whenever rodents need to be temporary housed on mesh flooring: excrements are collected in a separate PC waste tray. Rats and guinea pigs are housed on 11x11 mm mesh, whilst mice require a 7x7 mm grid spacing. Mesh bottom cages can be either used with Double Runner Style Racks or Individual S/S Support Frame.

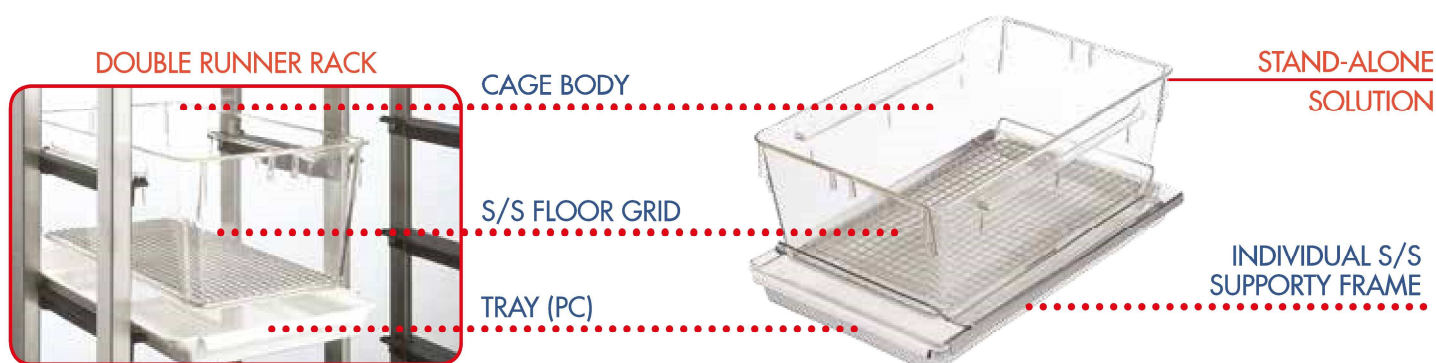
Cage body	Rack configuration				Rack model		Dimensions without bumpers L x W x H (mm/in)
	Nr of cages	Design	Rows	Columns	Without bumpers	with bumpers	
1144B	64	Single-sided	8	8	2B64B1000	2B64B1000BW	1494 x 480 x 1874 / 58.82 x 18.90 x 73.78
1145T	42	Single-sided	7	6	2T42B1000	2T42B1000BW	1128 x 500 x 1648 / 44.41 x 19.68 x 64.88
	48	Single-sided	8	6	2T48B1000	2T48B1000BW	1128 x 500 x 1861 / 44.41 x 19.68 x 73.27
	64	Single-sided	8	8	2T64B1000	2T64B1000BW	1494 x 500 x 1861 / 58.82 x 19.68 x 73.27
	128	Double-sided	8	8	2T128B1000	2T128B1000BW	1494 x 865 x 1861 / 58.82 x 34.06 x 73.27
1264C 1284L	30	Single-sided	6	5	2CL30B1000	2CL30B1000BW	1240 x 480 x 1871 / 48.82 x 18.90 x 73.66
	36	Single-sided	6	6	2CL36B1000	2CL36B1000BW	1482 x 480 x 1871 / 58.35 x 18.90 x 73.66
	48	Single-sided	8	6	2CL48B1000	2CL48B1000BW	1482 x 480 x 1996 / 58.35 x 18.90 x 78.58
	60	Double-sided	6	5	2CL60B1000	2CL60B1000BW	1240 x 880 x 1871 / 48.82 x 34.65 x 73.66
	70	Double-sided	7	5	2CL70B1000	2CL70B1000BW	1240 x 880 x 1871 / 48.82 x 34.65 x 73.66
1290D	24	Single-sided	6	4	2D24B1000	2D24B1000BW	1214 x 515 x 1877 / 47.80 x 20.28 x 73.90
1290D 1291H	20	Single-sided	5	4	2H20B1000 ^{□□}	2H20B1000BW ^{□□}	1214 x 515 x 1655 / 47.80 x 20.28 x 65.16
	20	Single-sided	5	4	2H20B1000H [□]	2H20B1000HBW [□]	1214 x 515 x 1877 / 47.80 x 20.28 x 73.90
	24	Single-sided	6	4	2H24B1000 ^{□□}	2H24B1000BW ^{□□}	1214 x 515 x 1947 / 47.80 x 20.28 x 76.65
	30	Single-sided	6	5	2H30B1000	2H30B1000BW	1510 x 480 x 1947 / 59.45 x 18.90 x 76.65
2150E	25	Single-sided	5	5	2E25B1000	2E25B1000BW	1300 x 535 x 1874 / 51.18 x 21.06 x 73.78
	30	Single-sided	6	5	2E30B1000	2E30B1000BW	1300 x 535 x 1874 / 51.18 x 21.06 x 73.78
2154F	20	Single-sided	5	4	2F20B1000	2F20B1000BW	1178 x 580 x 1877 / 46.38 x 22.83 x 73.90
	25	Single-sided	5	5	2F25B1000	2F25B1000BW	1465 x 580 x 1877 / 57.68 x 22.83 x 73.90
1500U	15	Single-sided	5	3	2U15B1000	2U15B1000BW	1239 x 600 x 1791 / 48.78 x 23.62 x 70.51
	20	Single-sided	5	4	2U20B1000	2U20B1000BW	1642 x 600 x 1791 / 64.65 x 23.62 x 70.51
1354G	18	Single-sided	6	3	2G18B1000 [■]	-	1239 x 690 x 1877 / 48.78 x 27.17 x 73.90
	20	Single-sided	5	4	2G20B1000	2G20B1000BW	1642 x 690 x 1760 / 64.65 x 27.17 x 69.29
	20	Single-sided	5	4	2G20B1000H [□]	2G20B1000HBW [□]	1642 x 690 x 1877 / 64.65 x 27.17 x 73.90
	24	Single-sided	6	4	2G24B1000 [■]	2G24B1000BW [■]	1642 x 690 x 1877 / 64.65 x 27.17 x 73.90
2000P	15	Single-sided	5	3	2P15B1000	2P15B1000BW	1395 x 725 x 1877 / 54.92 x 28.54 x 73.90
	18		6	3	2P18B1000LW [■]	2P18B1000LWBW [■]	1395 x 725 x 1980 / 54.92 x 28.54 x 77.95

□ can be used with raised lid

□□ close distance between cages when filter tops are used

■ to be used with bottle type F

■ ■ cannot be used with filter tops



Cage body	Rack configuration			Rack model with double runners		Dimensions without bumpers L x W x H (mm/in)	PC body with cut-away base	S/S mesh floor grid 7x7/11x11 mm	Tray (PC)	Individual S/S support frame
	Nr of cages	Design	Rows/columns	Without bumpers	with bumpers					
1264C/1284L	30	single-sided	6/5	2CL30B2000	2CL30B2000BW	1238 x 480 x 1871 / 48.76 x 18.90 x 73.66	- 051	- 524 / -	- 382	- 905
1290D	24	single-sided	6/4	2D24B2000	2D24B2000BW	1214 x 515 x 1877 / 47.80 x 20.28 x 73.90	- 051	- 524 / - 525	- 382	- 905
1291H	20	single-sided	5/4	2H20B2000	2H20B2000BW	1214 x 515 x 1877 / 47.80 x 20.28 x 73.90	- 051	- 524 / - 525	- 382 [□]	- 905 [□]
1354G	20	single-sided	5/4	2G20B2000	2G20B2000BW	1642 x 690 x 1877 / 64.65 x 27.17 x 73.90	- 051	- 524 / - 525	- 382	- 905

□ 1291H to be ordered as 1290D - 382 / -905

Whatever your needs are,
we have the
right answer for you!

TECNIPLAST STANDARD CASTORS ARE COATED WITH POLYURETHANE AND WITHSTAND AUTOCLAVE CYCLES AT 121°C/250°F WHEN RACKS ARE NOT LOADED WITH CAGES. ALTERNATIVELY, IN CASE OF FREQUENT AUTOCLAVING, HIGHER HOLDING TEMPERATURES, OR WHEN RACKS ARE AUTOCLAVED FULLY LOADED, SELECT CASTORS WITH GLASS-FIBRE-REINFORCED NYLON WHEELS.

ADJUSTABLE SHELF STYLE RACK



Equipped with brackets at each corner for a quick change of shelf height by screws, the design of this rack allows the selection of the desired number of shelves. Their later addition or removal, moreover, offers a high density capacity as well as great flexibility to accommodate changed cage sizes during the years. They can be used as single or double-sided racks (with cage series 1264C).

Rack Configuration:

- Shelves (available in different lengths).
- Set of four uprights (available in two sizes).
- Set of four castors (two unbraked and two braked).

Adjustable shelf style rack configuration		
Cat. No.	Description	Dimensions L x W (mm/in)
2UNR0060	shelf	1524 x 585 / 60.00 x 23.03
2UNR0065	shelf	1651 x 585 / 65.00 x 23.03
2UNR0070	shelf	1780 x 585 / 70.08 x 23.03
2UNRPT1676	set of 4 uprights	H 1676 [□] / 65.98 [□]
2UNRPT1834	set of 4 uprights	H 1834 [□] / 72.20 [□]
ACROTLIB125CX ^{□□}	Polyurethane coated unbraked castor	Ø 125 / 4.92
ACROTFRE125CX ^{□□}	Polyurethane coated braked castor	Ø 125 / 4.92

Cage body	Number of cages per shelf		
	Shelf length (mm/in)		
	1524/60.00	1651/65.00	1780/70.08
1144B - 1145T	8	9	10
1264C	12	14	14
1284L	6	7	8
1290D - 1291H	5	5	6
2150E	5	6	7
2154F	5	5	6
1500U	3	4	4

□ does not include the castor height (= 155 mm)

□□ to be ordered twice

DEMOUNTABLE SHELF STYLE RACK



Completely demountable with shelves, easily removable without tools.

Solid sheet shelves have side- and back-lips for added security of cage position.

Normally used as single-sided racks only.

Available in two different sizes.

Cage body	Nr of cages per shelf	Dimensions L x W x H (mm/in)	Nr of shelves	Cat. No.
1144B	7	1210 x 390 ^o x 1843 47.64 x 15.35 ^o x 72.56	6	2UN1D500
1145T	6			
1264C 1284L 2150E	5			
1290D 1291H	6	1773 x 572 x 1868 69.80 x 22.50 x 73.54	5	2UN2D500
1500U 1354G	4			

□ overall width including wheels = 480 mm / 18.90 in

WELDED SHELF STYLE RACK



Fully welded for maximum strength and rigidity.

Simple design for easier cleaning and significant comparative low cost.

Only one size available.

Cage body	Nr of cages per shelf	Dimensions L x W x H (mm/in)	Nr of shelves	Cat. No.
1144B	7	1307 x 547 x 1712 51.46 x 21.54 x 67.40	5 (6 ^o)	2UN5B106
1145T	6			
1264C 1284L	5	1307 x 547 x 1712 51.46 x 21.54 x 67.40	5 (6 ^o)	2UN5B106
1290D	4			

□ the roof can be used as extra shelf